

# Reliable®

## Model FA1 Grooved Flange ANSI125/150

cULus Listed, FM Approved

### FA1 Grooved Flange Technical Data

**Operating Specifications**
**Maximum Working Pressure:**

See Table B

**Operating Temperature**

-30 °F to 230 °F (-34 °C to 110 °C)

**Material Specifications**
**Body:** ASTM A536 Grade 65-45-12 Ductile Iron

**Design Specification**
**Groove:** AWWA-C606

**Flange:** ASME B16.5 Class 125/150

**Bolt Specification**

SAE J429 Grade 5

**Available Finishes**
**Housing:**

Standard orange paint

Hot dipped galvanized (ASTM A-153)

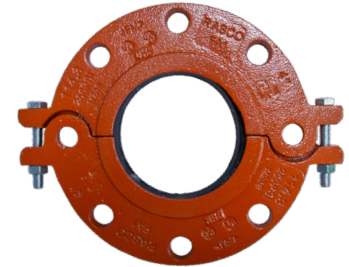
**Bolts:**

Zinc Electroplating

**Listings and Approvals**

cULus Listed

FM Approved



### FA1 Grooved Flange Dimensions

Figure 1

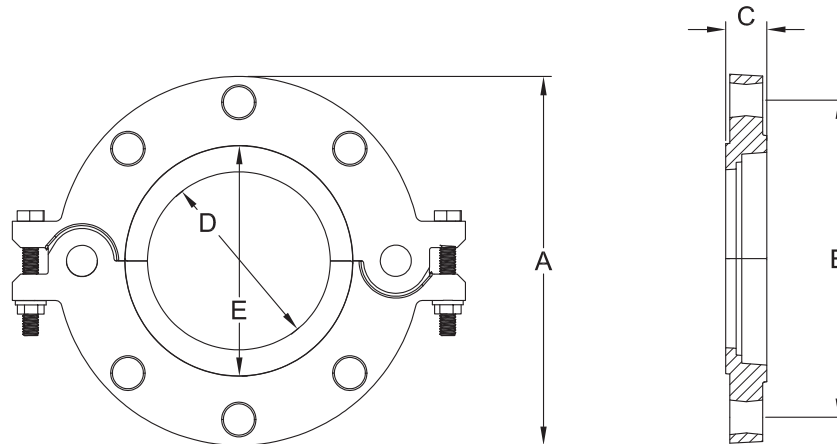


Table A

Nominal Size in (mm)	Pipe O.D. in (mm)	Max. End Load lbs (KN)	Bolts Size in	Number of Bolts	Dimensions					Weight lb (kg)
					A in (mm)	B in (mm)	C in (mm)	D in (mm)	E in (mm)	
2 (50)	2.375 (60.3)	1330 (5.71)	5/8	4	6-1/8 (155)	4-3/4 (121)	5/8 (16)	2-1/2 (65)	3-1/16 (78)	4.19 (1.90)
2-1/2 (65)	2.875 (73.0)	1950 (8.37)	5/8	4	7-1/8 (180)	5-1/2 (140)	5/8 (16)	2-1/2 (65)	3-11/16 (93)	4.87 (2.21)
3 (80)	3.500 (88.9)	2880 (12.41)	5/8	4	7-1/2 (190)	6 (153)	3/4 (18)	2-1/2 (65)	4-3/16 (107)	5.18 (2.35)
4 (100)	4.500 (114.3)	4770 (20.51)	5/8	8	9-1/16 (230)	7-1/2 (191)	7/8 (22)	2-3/4 (70)	5-3/16 (131)	7.28 (3.30)
6 (150)	6.625 (168.3)	10340 (44.47)	3/4	8	11 (280)	8-1/2 (241)	7/8 (22)	2-3/4 (70)	7-1/4 (185)	10.54 (4.78)
8 (200)	8.625 (219.1)	17520 (75.37)	3/4	8	13-11/16 (345)	11-3/4 (299)	1 (25)	3-1/8 (80)	9-1/4 (234)	6.58 (14.51)
10 (250)	10.750 (273.0)	27210 (164.71)	1	12	15-15/16 (405)	14-1/4 (362)	1-3/16 (30)	10-3/4 (273)	11-9/16 (294)	24.81 (11.25)
12 (300)	12.750 (323.9)	38280 (164.71)	1	12	19-1/8 (485)	17 (432)	1-1/4 (32)	12-3/4 (324)	13-7/16 (341)	36.93 (16.75)

**FA1 Pipe Compatibility**

**Table B**

Nominal Size in (mm)	Groove Type	Pipe	Approvals	Pressure Rating psi (bar)
2 (50)	Rolled	10	cULus, FM	300 (20.7)
	Cut, Rolled	40		
2-1/2 (65)	Rolled	10	cULus, FM	300 (20.7)
	Cut, Rolled	40		
3 (80)	Rolled	10	cULus, FM	300 (20.7)
	Cut, Rolled	40		
4 (100)	Rolled	10	cULus, FM	300 (20.7)
	Cut, Rolled	40		
6 (150)	Rolled	10	cULus, FM	300 (20.7)
	Cut, Rolled	40		
8 (200)	Rolled	10	cULus	300 (20.7)
	Cut, Rolled	40	cULus	300 (20.7)
			FM	250 (17.2)
10 (250)	Rolled	10	cULus	300 (20.7)
	Cut, Rolled	40	cULus	300 (20.7)
			FM	250 (17.2)
12 (300)	Rolled	10	cULus	300 (20.7)
	Cut, Rolled	40	cULus	300 (20.7)
			FM	250 (17.2)